

BOX RLF 400 T4 0,75kW

Series general data BOX RLF



MANUFACTURING FEATURES

- Box manufactured in galvanised steel sheet. Soundproof cabinets with Flexiroll Pol Na 30 Anthracite grey M1 fire resistance insulated panels.
- Circular inlet flange.
- Backward impeller, direct coupling motor.
- Standard asynchronous squirrel-cage motor with IP-55 protection and Class H insulation type F400 2h.
- Manufactured with standard voltages: 230/400V 50Hz in three phase motors up to 3kW, and 400/690V 50Hz for higher powers.
- Exchangeable panels.

APPLICATIONS

Designed for inline installation, they are suitable for:

- Air renewal in buildings and industries.
- Maximum working temperature: 60°C.

UNDER REQUEST

- Double skin insulation.

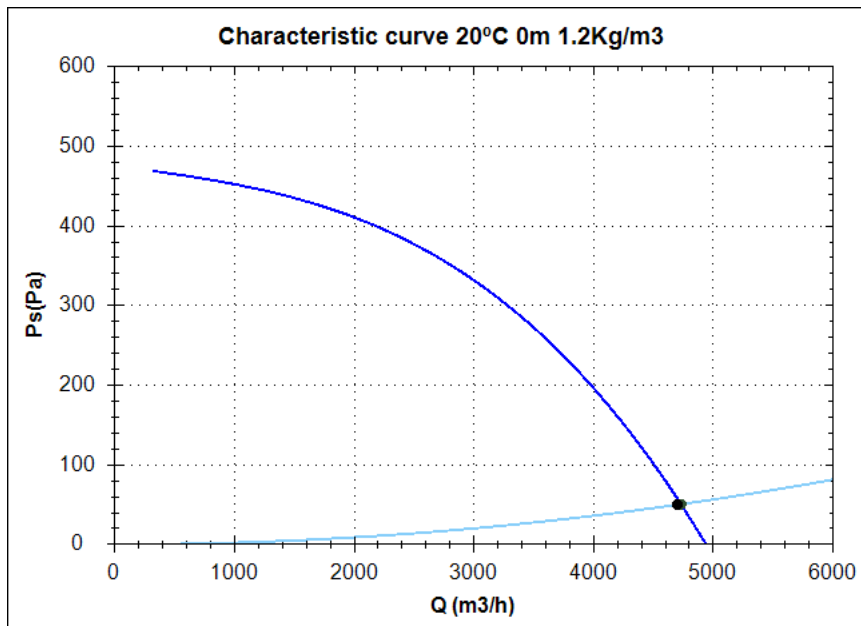
Official homologation by the European laboratory APPLUS according to EN 12101-3:2002, EN 12101-3:2002/AC:2005
Certification Nr: 0370-CPD-0582

* You can find the certificate in the menu: " company/technical data/400°C/2h CE".

Series accessories BOX RLF



Characteristic curve



Design point

Q (m ³ /h)	4701.36
Ps(Pa)	50.05

Service point

Impeller rpm	1430
Max. temp.(°C)	60
Q (m ³ /h)	4730.46
Ps(Pa)	50.68
Pd(Pa)	66.91
Pt(Pa)	117.59
Air speed(m/s)	10.56
SWL dB(A)	76 (INLET)
SPL dB(A)	62 (INLET)
Distance(m)	1.5

Technical data

Impeller rpm	1430
Motor rpm	1430
Approx. weight(kg)	
Maximum flow rate(m ³ /h)	4950

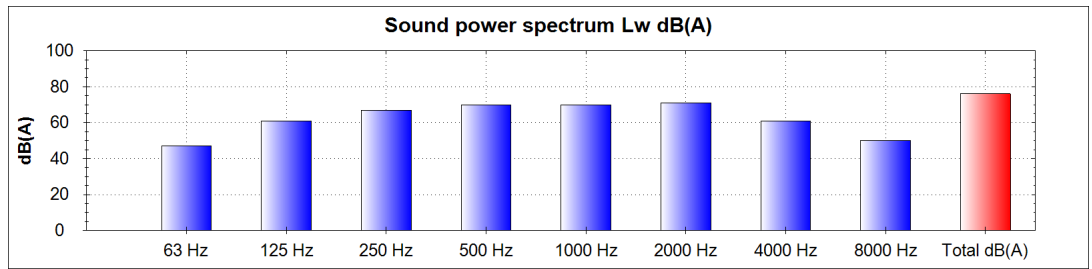
Power(kW)	0,75
Imax 230V(A)	3,46
Imax 400V(A)	2
Imax 690V(A)	-

BOX RLF 400 T4 0,75kW

Acoustics to the service point (INLET)

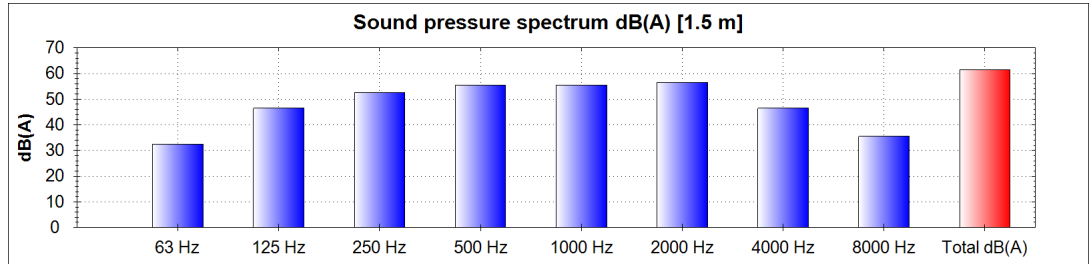
Power dB(A)

63 Hz	47
125 Hz	61
250 Hz	67
500 Hz	70
1000 Hz	70
2000 Hz	71
4000 Hz	61
8000 Hz	50
Total dB(A)	76

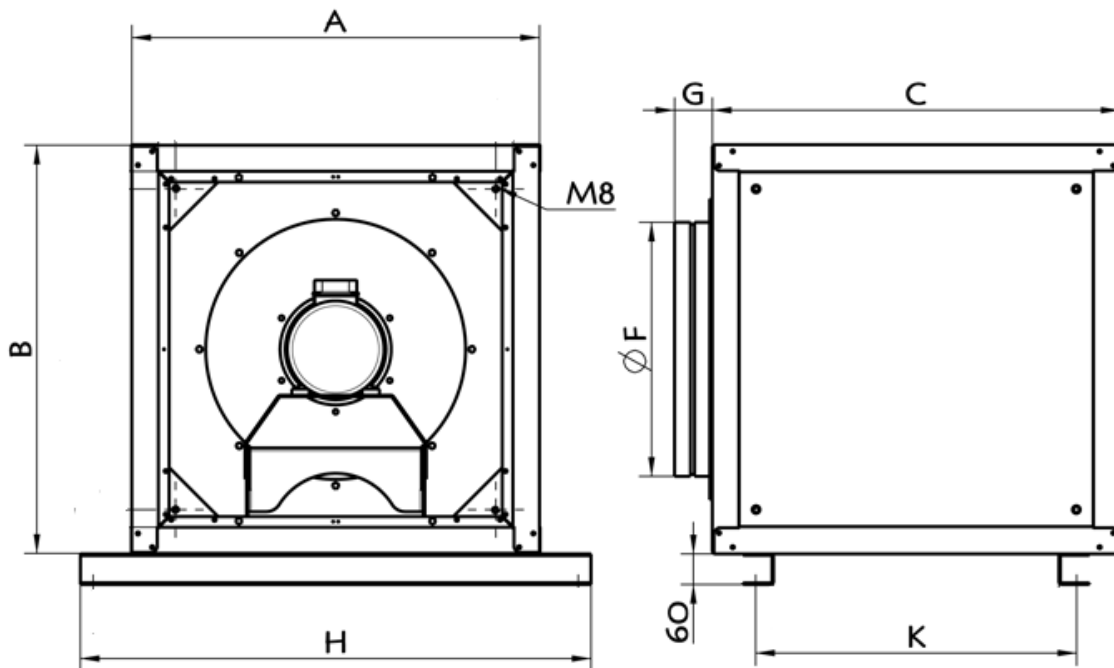


Pressure dB(A) [1.5 m]

63 Hz	32
125 Hz	46
250 Hz	52
500 Hz	55
1000 Hz	55
2000 Hz	56
4000 Hz	46
8000 Hz	35
Total dB(A)	62



dimensions diagram



Dimensions (mm)

A=800	B=800	C=800	G=74	H=1002	K=628,5	ØF=398
-------	-------	-------	------	--------	---------	--------

Wiring diagram

