

BOX RLF 400 T6 0,55kW

Series general data BOX RLF



MANUFACTURING FEATURES

- Box manufactured in galvanised steel sheet. Soundproof cabinets with Flexiroll Pol Na 30 Anthracite grey M1 fire resistance insulated panels.
- Circular inlet flange.
- Backward impeller, direct coupling motor.
- Standard asynchronous squirrel-cage motor with IP-55 protection and Class H insulation type F400 2h.
- Manufactured with standard voltages: 230/400V 50Hz in three phase motors up to 3kW, and 400/690V 50Hz for higher powers.
- Exchangeable panels.

APPLICATIONS

Designed for inline installation, they are suitable for:

- Air renewal in buildings and industries.
- Maximum working temperature: 60°C.

UNDER REQUEST

- Double skin insulation.

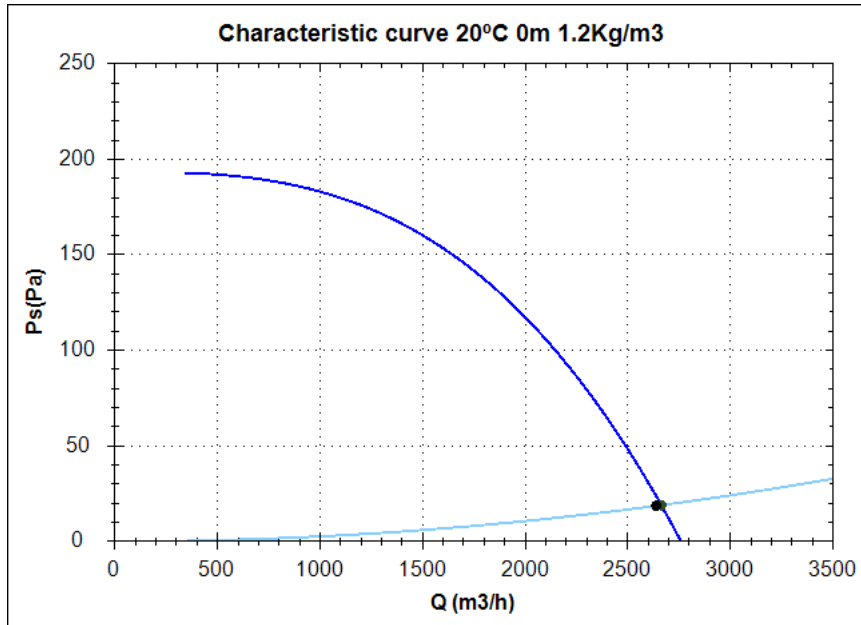
Official homologation by the European laboratory APPLUS according to EN 12101-3:2002, EN 12101-3:2002/AC:2005
Certification Nr: 0370-CPD-0582

* You can find the certificate in the menu: " company/technical data/400°C/2h CE".

Series accessories BOX RLF



Characteristic curve



Design point

Q (m ³ /h)	2639.22
Ps(Pa)	18.71

Service point

Impeller rpm	940
Max. temp.(°C)	60
Q (m ³ /h)	2663.34
Ps(Pa)	19.06
Pd(Pa)	21.21
Pt(Pa)	40.27
Air speed(m/s)	5.95
SWL dB(A)	66 (INLET)
SPL dB(A)	52 (INLET)
Distance(m)	1.5

Technical data

Impeller rpm	940
Motor rpm	940
Approx. weight(kg)	
Maximum flow rate(m ³ /h)	2760

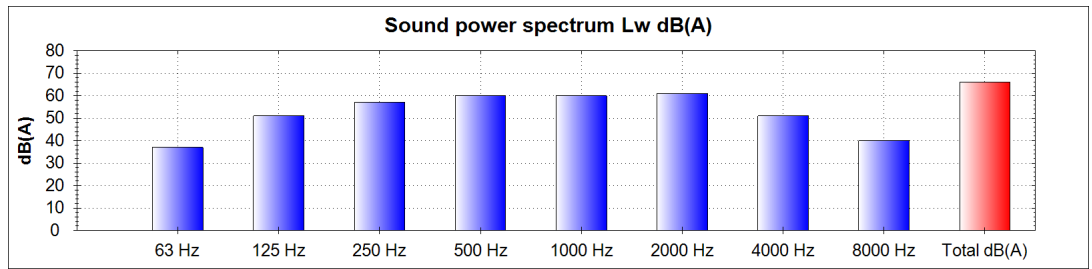
Power(kW)	0,55
Imax 230V(A)	3,03
Imax 400V(A)	1,75
Imax 690V(A)	-

BOX RLF 400 T6 0,55kW

Acoustics to the service point (INLET)

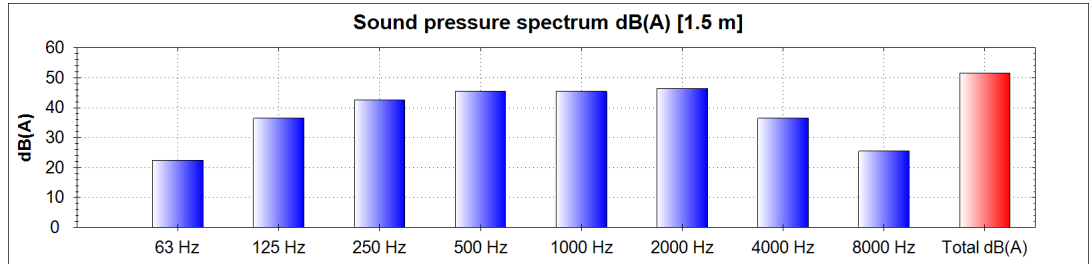
Power dB(A)

63 Hz	37
125 Hz	51
250 Hz	57
500 Hz	60
1000 Hz	60
2000 Hz	61
4000 Hz	51
8000 Hz	40
Total dB(A)	66

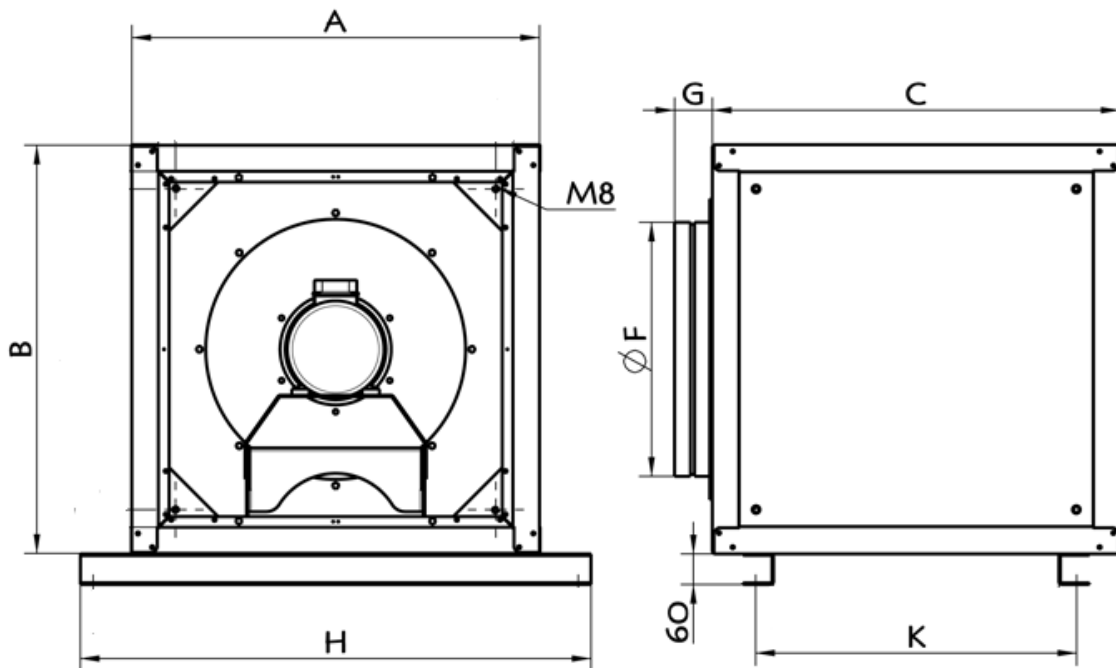


Pressure dB(A) [1.5 m]

63 Hz	22
125 Hz	36
250 Hz	42
500 Hz	45
1000 Hz	45
2000 Hz	46
4000 Hz	36
8000 Hz	25
Total dB(A)	52



dimensions diagram

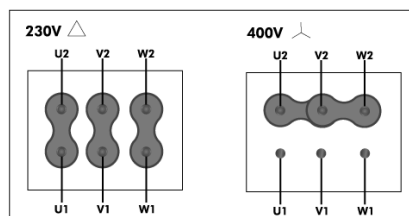


Dimensions (mm)

A=800	B=800	C=800	G=74	H=1002	K=628,5	ØF=398
-------	-------	-------	------	--------	---------	--------

Wiring diagram

230/400V



400/690V

