

# AA 66 T2 4kW

## Series general data AA47-70



### MANUFACTURING FEATURES:

- Rolling steel sheet housing.
- Fully welded housing.
- High efficiency single inlet backWard curved impeller manufactured in cast aluminium.
- Epoxy powder finishing coat.
- Standard asynchronous squirrel-cage motor with IP-55 protection and class F insulation. Standard voltages 230/400V 50Hz, motors up to 4kW and 400/690V 50Hz for higher powers.

### APPLICATIONS:

- Designed for inline installation, they are suitable for:
- Industrial applications, extraction or injection of air.
  - Cooling of machines and parts.
  - Clean air transport.
  - Exhaust after filters, separators and cyclones.
  - Pneumatic transport.
  - Maximum working temperature: carried air: 130°C, ambient 60°C.

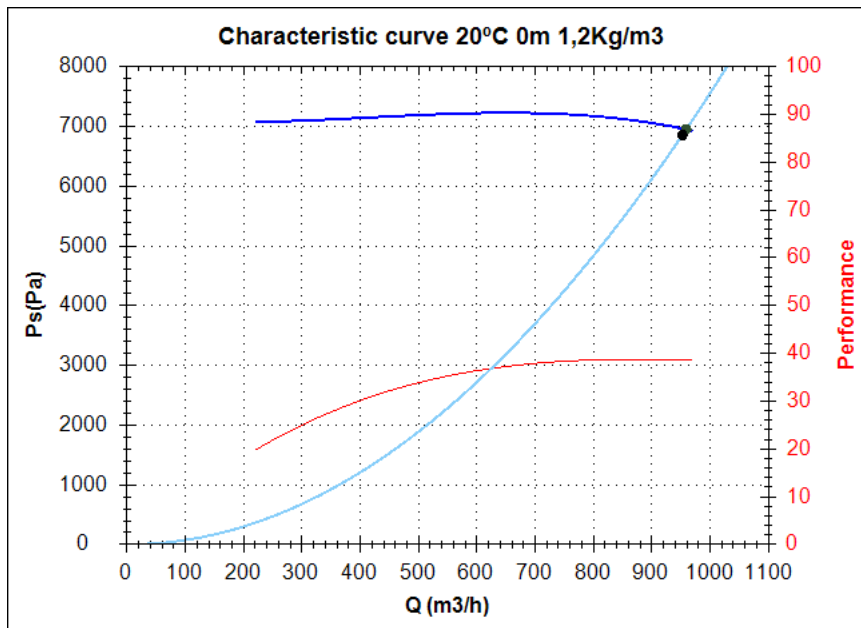
### UNDER REQUEST:

- 60Hz fans and special voltages.
- 2 speed motors.
- Flame proof or explosion proof ATEX certified motors.

## Series accessories AA47-70



## Characteristic curve



### Design point

Q (m3/h)	952,49
Ps(Pa)	6855,37

### Service point

Impeller rpm	2800
Max. temp.(°C)	130
Q (m3/h)	959,14
Ps(Pa)	6951,44
Pd(Pa)	179,68
Pt(Pa)	7131,12
Air speed(m/s)	17,31
Perf.(%)	38,57
SWL dB(A)	98 (INLET)
SPL dB(A)	84 (INLET)
Distance(m)	1,5

## Technical data

Impeller rpm	2800
Motor rpm	2890
Approx. weight(kg)	82
Maximum flow rate(m3/h)	970

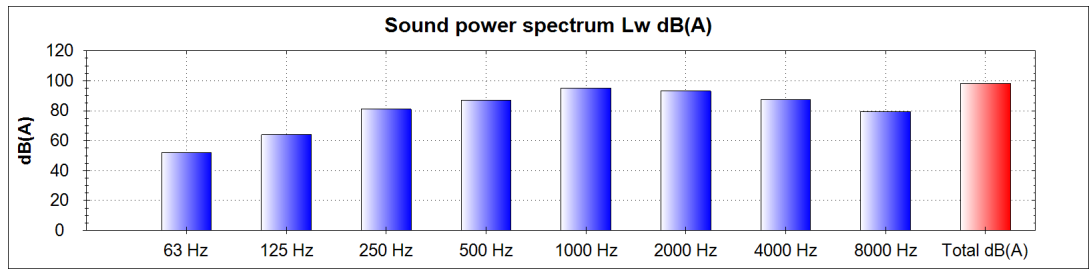
Power(kW)	4
Imax 230V(A)	14,2
Imax 400V(A)	8,2
Imax 690V(A)	-

# AA 66 T2 4kW

## Acoustics to the service point (INLET)

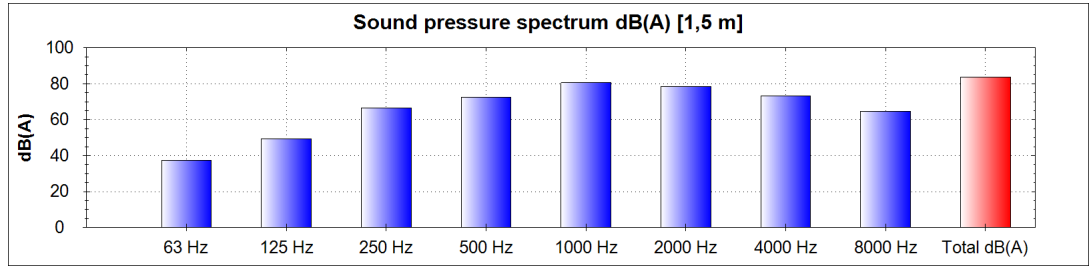
### Power dB(A)

63 Hz	52
125 Hz	64
250 Hz	81
500 Hz	87
1000 Hz	95
2000 Hz	93
4000 Hz	88
8000 Hz	79
Total dB(A)	98

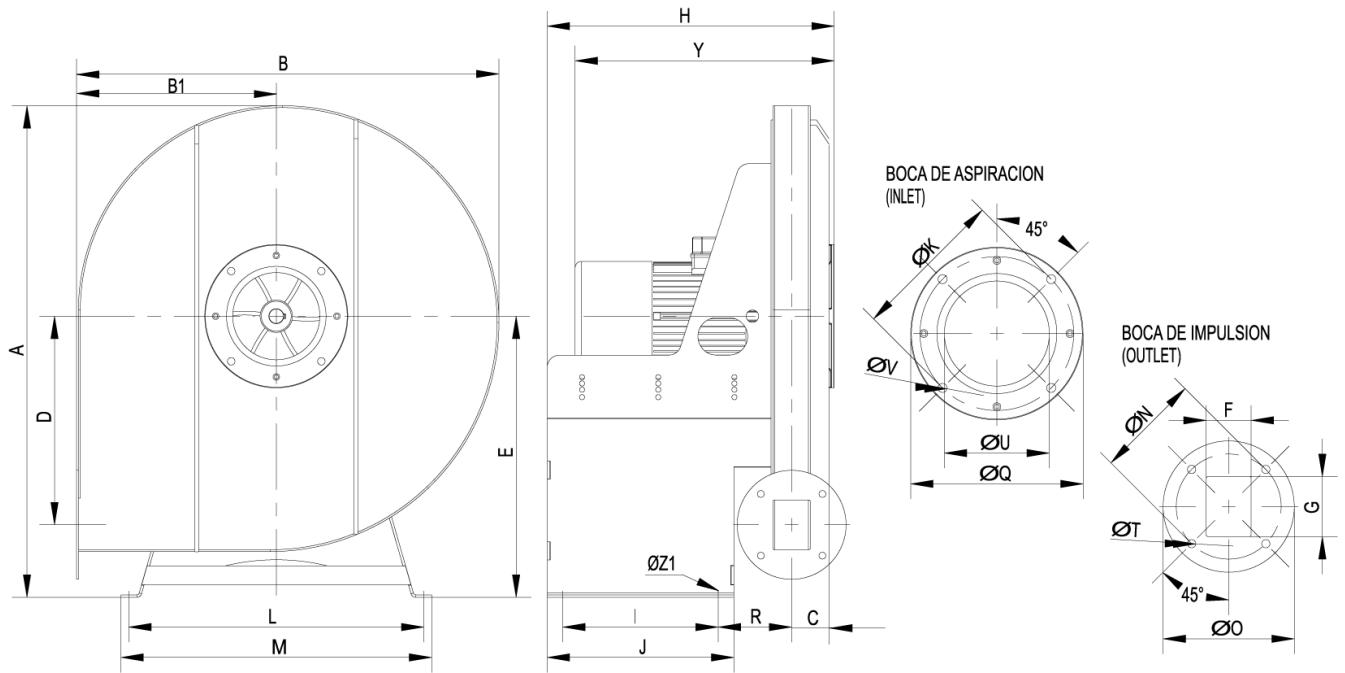


### Pressure dB(A) [1,5 m]

63 Hz	37
125 Hz	49
250 Hz	66
500 Hz	72
1000 Hz	81
2000 Hz	79
4000 Hz	73
8000 Hz	65
Total dB(A)	84



## dimensions diagram



### Dimensions (mm)

A=866	B=755	B1=359	C=715	D=373	E=490	F=60	G=80	H=464,5	I=250	J=300	KØ=205
L=545	M=570	NØ=140	OØ=175	QØ=230	R=118	TØ=11	UØ=140	VØ=12	Y=4235	Z1=11	

## Wiring diagram

