

# MA 18 M2 0,09kW

## Series general data MA18-25



THIS PRODUCT MEETS THE EFFICIENCY VALUES REQUIRED BY ErP 2013/2015

### MANUFACTURING FEATURES:

- Rolling steel sheet housing.
- Cast aluminium impeller.
- Epoxy powder finishing coat.
- Standard asynchronous squirrel-cage motor with IP-55 protection and Class F insulation. Manufactured with standard voltages: 230V 50Hz in single phase motors and 230/400V 50Hz in three phase motors.
- Standard position LG 270.

### APPLICATIONS:

- Designed for inline installation, they are suitable for:
- Industrial applications, extraction or injection of air.
  - Cooling of machines and parts.
  - Clean and slightly dusty air transport.
  - Maximum working temperature: carried air: 130°C, ambient 60°C.

### UNDER REQUEST:

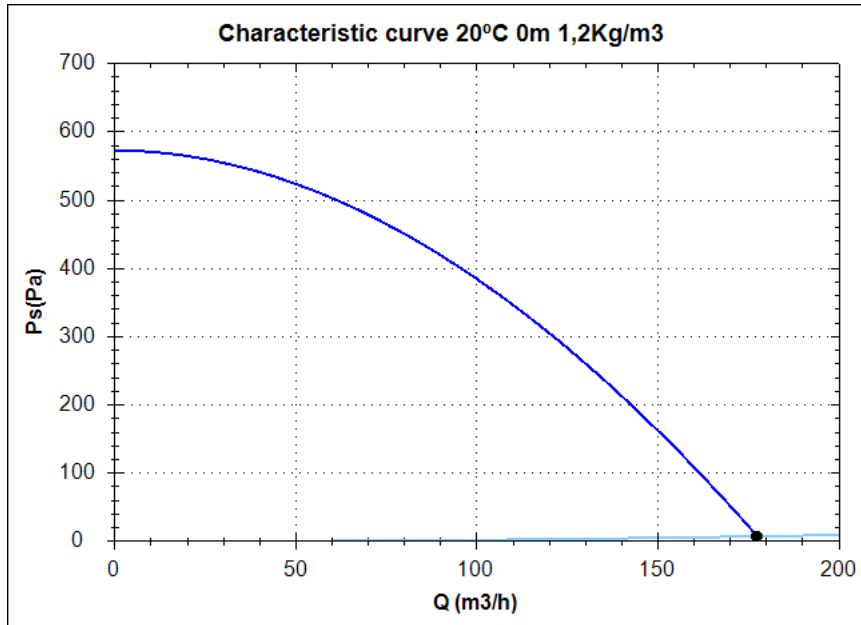
- 60Hz fans and special voltages.
- Position: LG 0, LG 90, LG 180.

• In "Company/Technical Documents/Directiva ErP 2009/125/CE" you can consult the technical brochures of each model certifying that they meet ErP 2009/125/EC directive.

## Series accessories MA18-25



## Characteristic curve



### Design point

Q (m3/h)	177,1
Ps(Pa)	7,54

### Service point

Impeller rpm	2760
Max. temp.(°C)	130
Q (m3/h)	177,50
Ps(Pa)	7,58
Pd(Pa)	57,71
Pt(Pa)	65,29
Air speed(m/s)	9,81
SWL dB(A)	79 (INLET)
SPL dB(A)	65 (INLET)
Distance(m)	1,5

## Technical data

Impeller rpm	2760
Motor rpm	
Approx. weight(kg)	6
Maximum flow rate(m3/h)	180

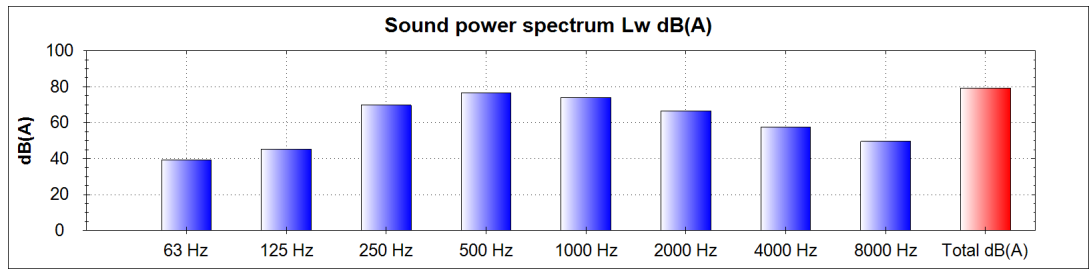
Power(kW)	0,09
Imax 230V(A)	0,81
Imax 400V(A)	-
Imax 690V(A)	-

# MA 18 M2 0,09kW

## Acoustics to the service point (INLET)

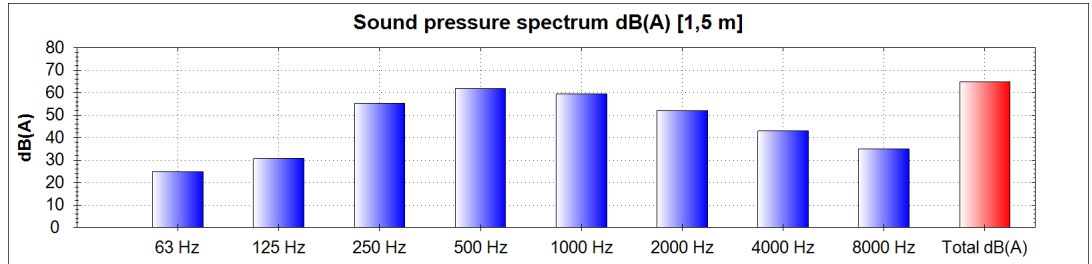
### Power dB(A)

63 Hz	39
125 Hz	45
250 Hz	70
500 Hz	76
1000 Hz	74
2000 Hz	67
4000 Hz	57
8000 Hz	50
Total dB(A)	79

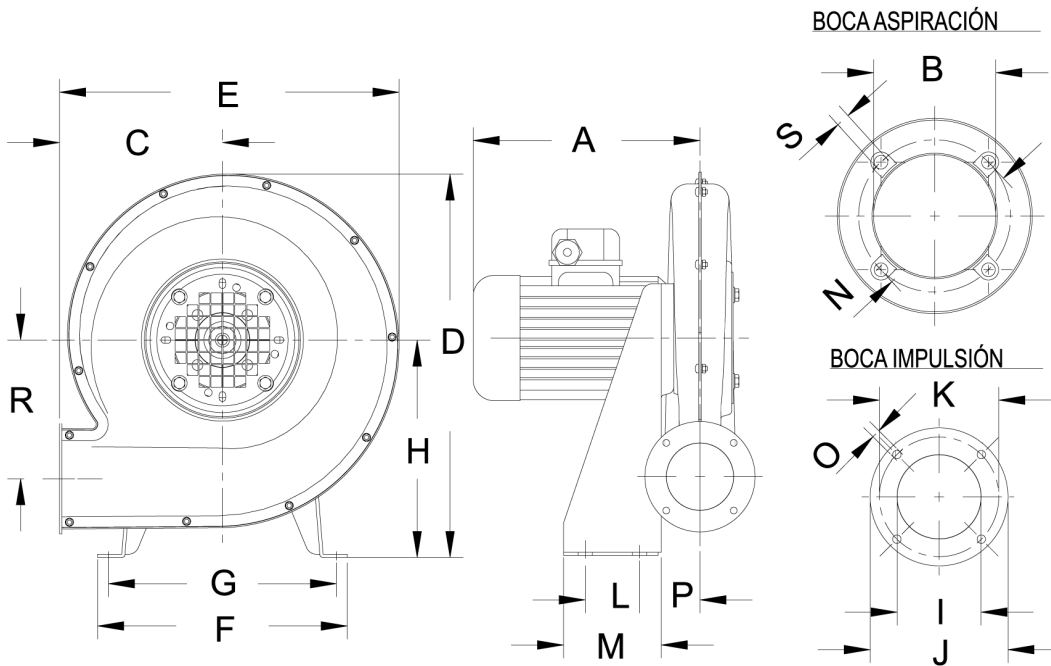


### Pressure dB(A) [1,5 m]

63 Hz	25
125 Hz	31
250 Hz	55
500 Hz	62
1000 Hz	60
2000 Hz	52
4000 Hz	43
8000 Hz	35
Total dB(A)	65



## dimensions diagram



### Dimensions (mm)

A	BØ=80	C=120	D=298	E=260	F=190	G=170	H=170	IØ=50	JØ=82	KØ=72	L=50
M=80	NØ=100	OØ=5,2	P=48	R=113,5	U=290	V=283	W=324,5	X=260	Y=310	Z=283	

## Wiring diagram

