

MA 18 T2 0,09kW

Series general data MA18-25



THIS PRODUCT MEETS THE EFFICIENCY VALUES REQUIRED BY ErP 2013/2015

MANUFACTURING FEATURES:

- Rolling steel sheet housing.
- Cast aluminium impeller.
- Epoxy powder finishing coat.
- Standard asynchronous squirrel-cage motor with IP-55 protection and Class F insulation. Manufactured with standard voltages: 230V 50Hz in single phase motors and 230/400V 50Hz in three phase motors.
- Standard position LG 270.

APPLICATIONS:

- Designed for inline installation, they are suitable for:
- Industrial applications, extraction or injection of air.
 - Cooling of machines and parts.
 - Clean and slightly dusty air transport.
 - Maximum working temperature: carried air: 130°C, ambient 60°C.

UNDER REQUEST:

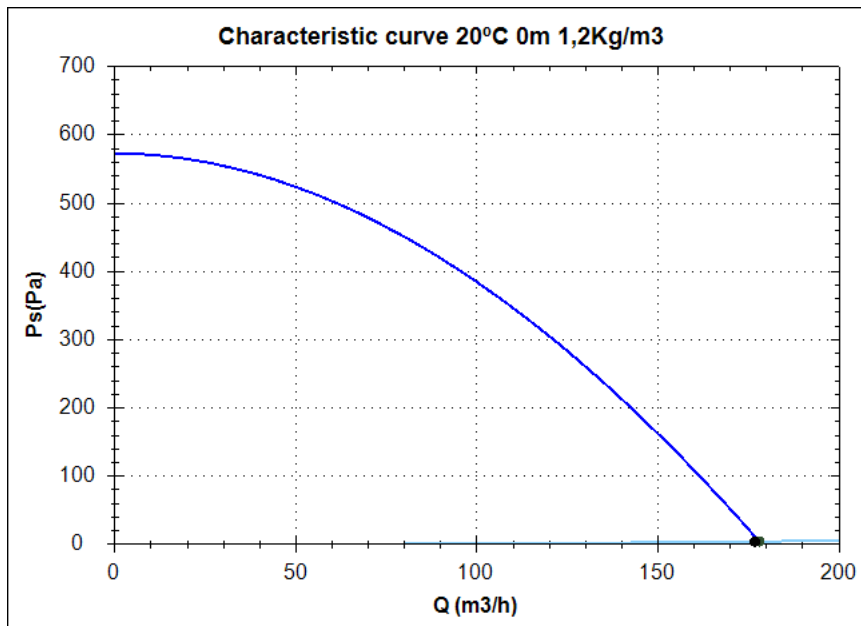
- 60Hz fans and special voltages.
- Position: LG 0, LG 90, LG 180.

• In "Company/Technical Documents/Directiva ErP 2009/125/CE" you can consult the technical brochures of each model certifying that they meet ErP 2009/125/EC directive.

Series accessories MA18-25



Characteristic curve



Design point

Q (m3/h)	176,78
Ps(Pa)	4,43

Service point

Impeller rpm	2800
Max. temp.(°C)	130
Q (m3/h)	178,01
Ps(Pa)	4,49
Pd(Pa)	58,04
Pt(Pa)	62,53
Air speed(m/s)	9,84
SWL dB(A)	79 (INLET)
SPL dB(A)	65 (INLET)
Distance(m)	1,5

Technical data

Impeller rpm	2800
Motor rpm	
Approx. weight(kg)	6
Maximum flow rate(m3/h)	180

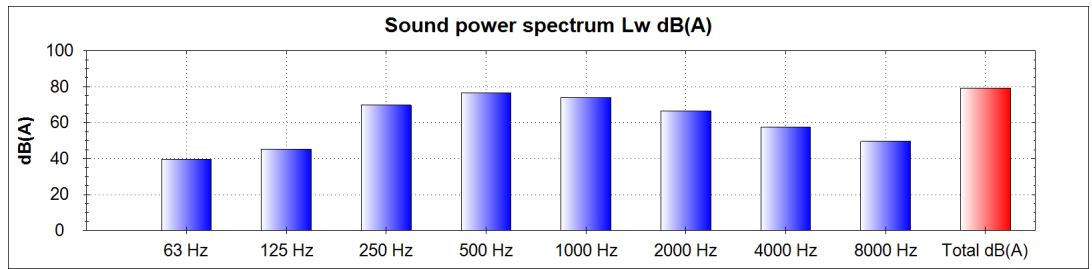
Power(kW)	0,1
Imax 230V(A)	0,57
Imax 400V(A)	0,33
Imax 690V(A)	-

MA 18 T2 0,09kW

Acoustics to the service point (INLET)

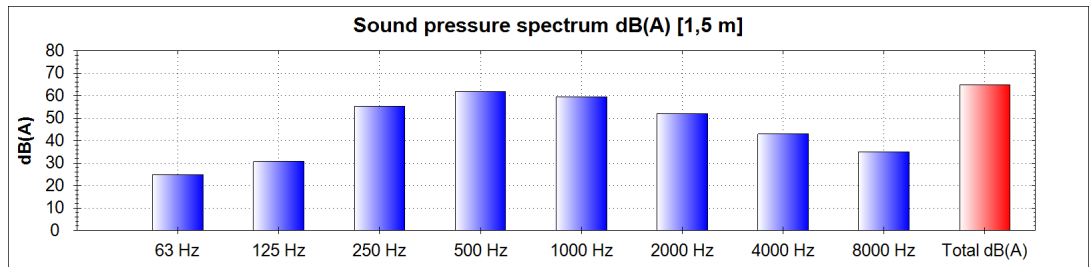
Power dB(A)

63 Hz	39
125 Hz	45
250 Hz	70
500 Hz	76
1000 Hz	74
2000 Hz	67
4000 Hz	57
8000 Hz	50
Total dB(A)	79

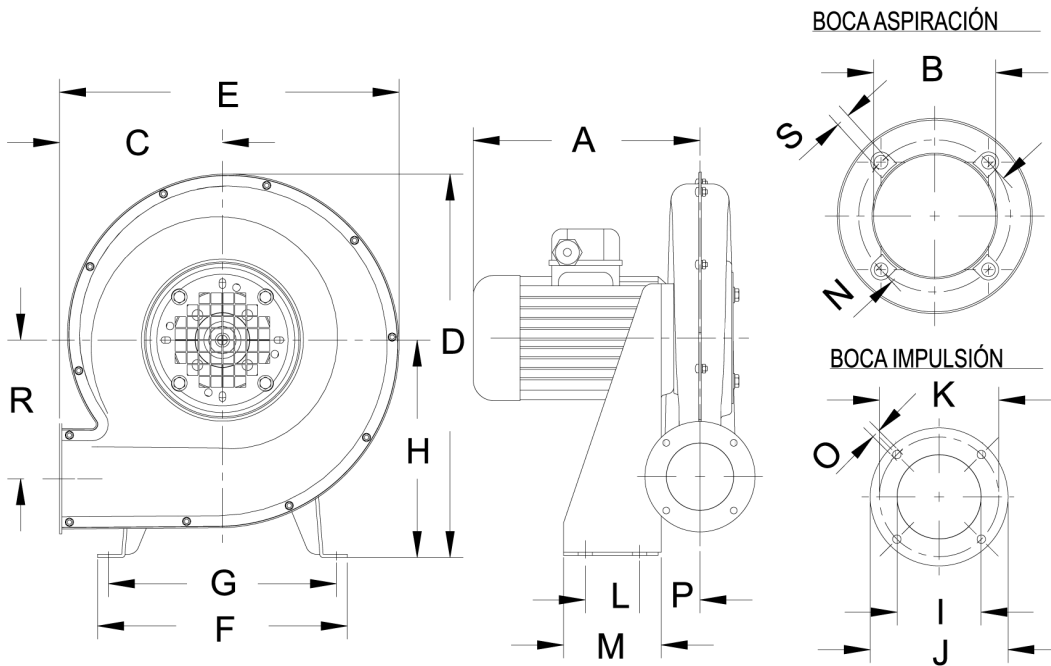


Pressure dB(A) [1,5 m]

63 Hz	25
125 Hz	31
250 Hz	55
500 Hz	62
1000 Hz	60
2000 Hz	52
4000 Hz	43
8000 Hz	35
Total dB(A)	65



dimensions diagram



Dimensions (mm)

A	BØ=80	C=120	D=298	E=260	F=190	G=170	H=170	IØ=50	JØ=82	KØ=72	L=50
M=80	NØ=100	OØ=5,2	P=48	R=113,5	U=290	V=283	W=324,5	X=260	Y=310	Z=283	

Wiring diagram

